

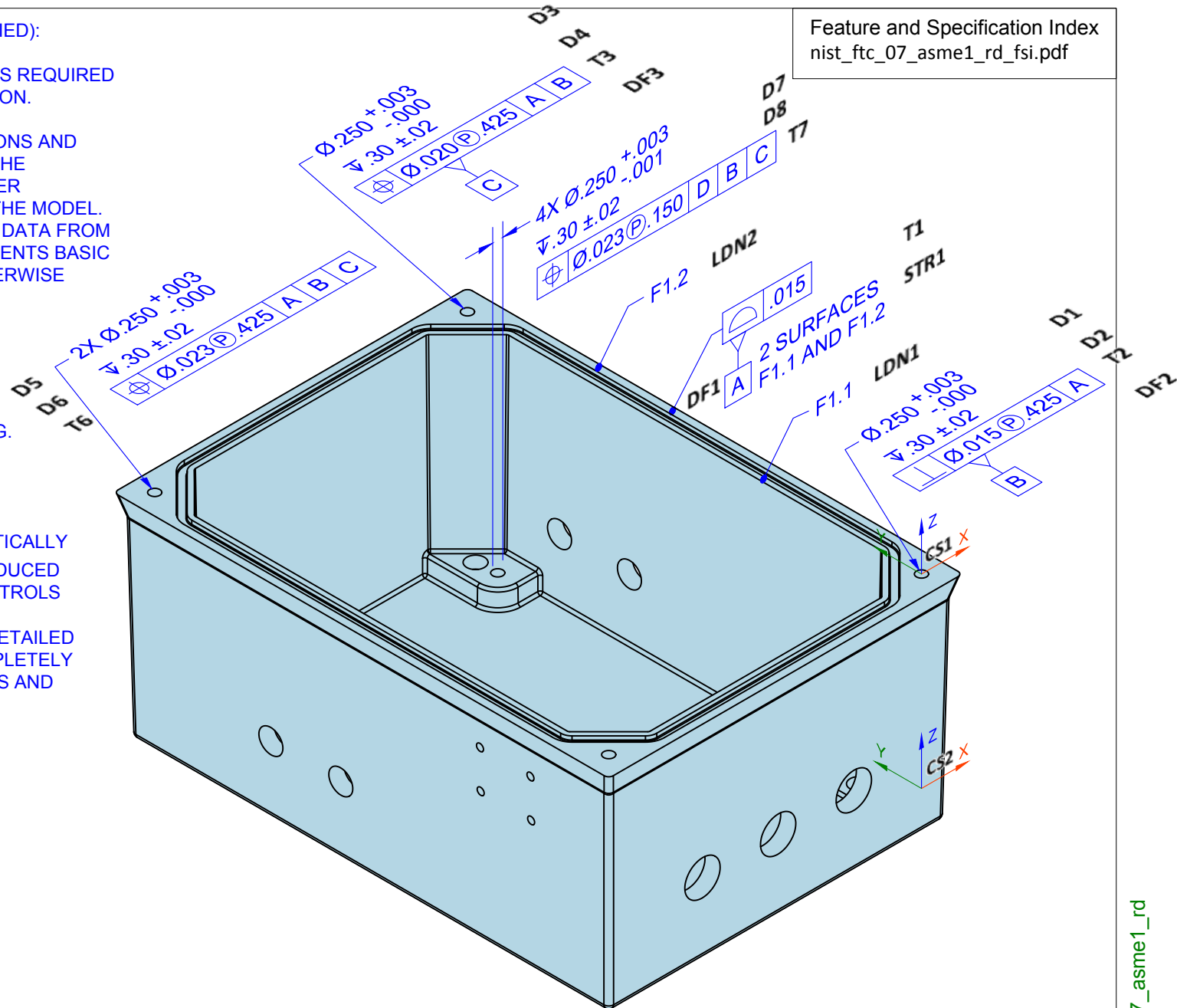
NIST PMI Test Models - 2014

STR8

NOTES (UNLESS OTHERWISE SPECIFIED):

1. CAD MODEL _____ REV. ____ IS REQUIRED TO COMPLETE PRODUCT DEFINITION.
2. DIRECTLY-TOLERANCED DIMENSIONS AND BASIC DIMENSIONS DEFINED ON THE DRAWING TAKE PRECEDENCE OVER DIMENSIONAL DATA DEFINED BY THE MODEL. OBTAIN ALL OTHER DIMENSIONAL DATA FROM THE MODEL. THE MODEL REPRESENTS BASIC DIMENSIONAL DATA UNLESS OTHERWISE SPECIFIED.
3. APPLICABLE STANDARDS:
ASME Y14.41-2003 APPLIES TO DATASET.
ASME Y14.5M-1994 APPLIES TO DIMENSIONING AND TOLERANCING.
4. $\text{[Symbol: Surface Texture]} .06 \text{ [Symbol: Feature Control Frame: A B C]}$ APPLIES TO ALL UNTOLERANCED SURFACES.
5. FEATURES IDENTIFIED AS STATISTICALLY TOLERANCED ($\text{[Symbol: Statistical Tolerance] ST}$) SHALL BE PRODUCED WITH STATISTICAL PROCESS CONTROLS OR TO THE MORE RESTRICTIVE ARITHMETIC LIMITS SPECIFIED. DETAILED PROCESS PLAN NEEDED TO COMPLETELY DEFINE STATISTICAL PARAMETERS AND REQUIREMENTS.
6. UNITS: INCHES

Feature and Specification Index
nist_ftc_07_asme1_rd_fsi.pdf

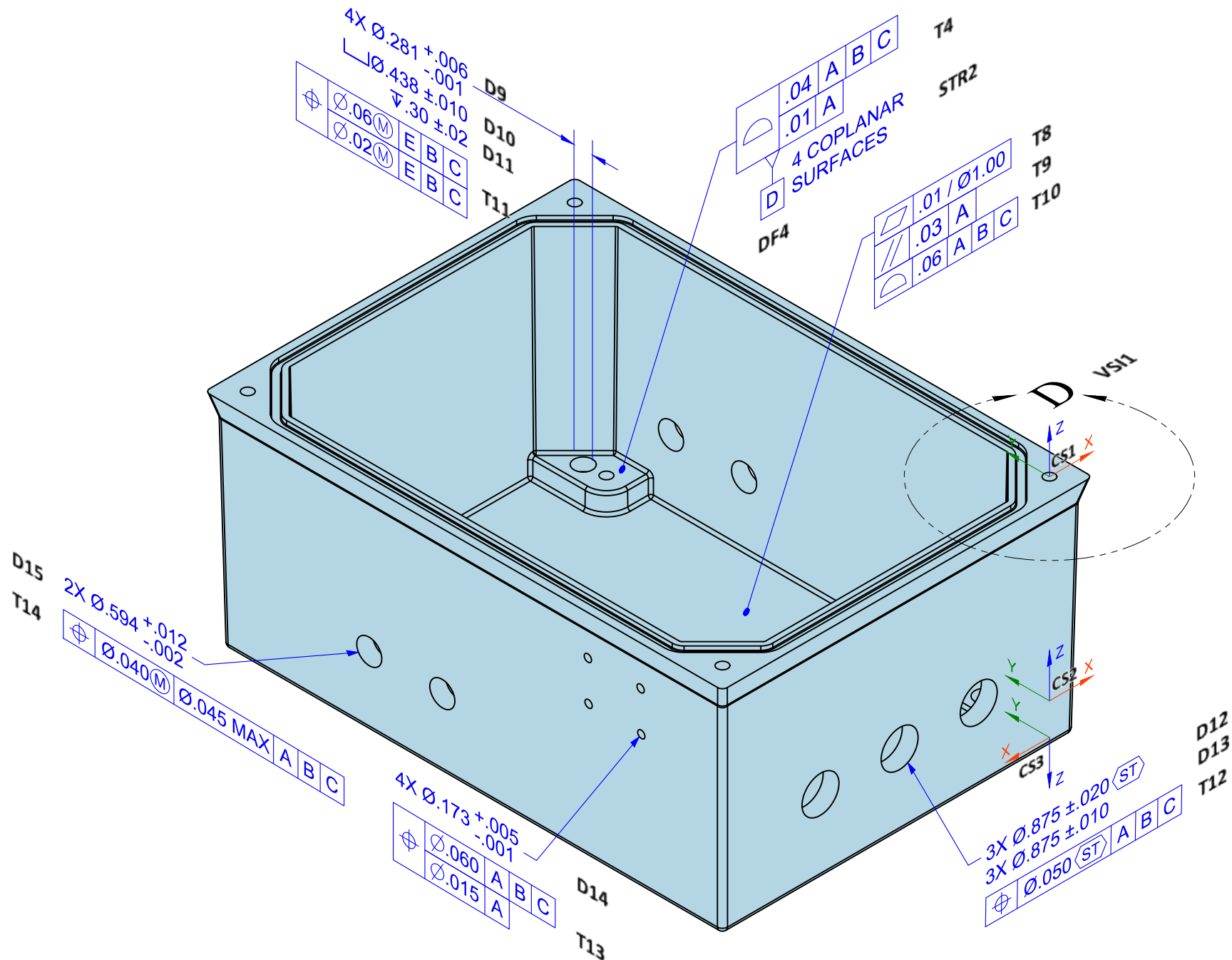


PMI Fully-Toleranced Test Case 7 - View A
Includes Atomic Test Cases - 84, 85

nist_ftc_07_asme1_rd

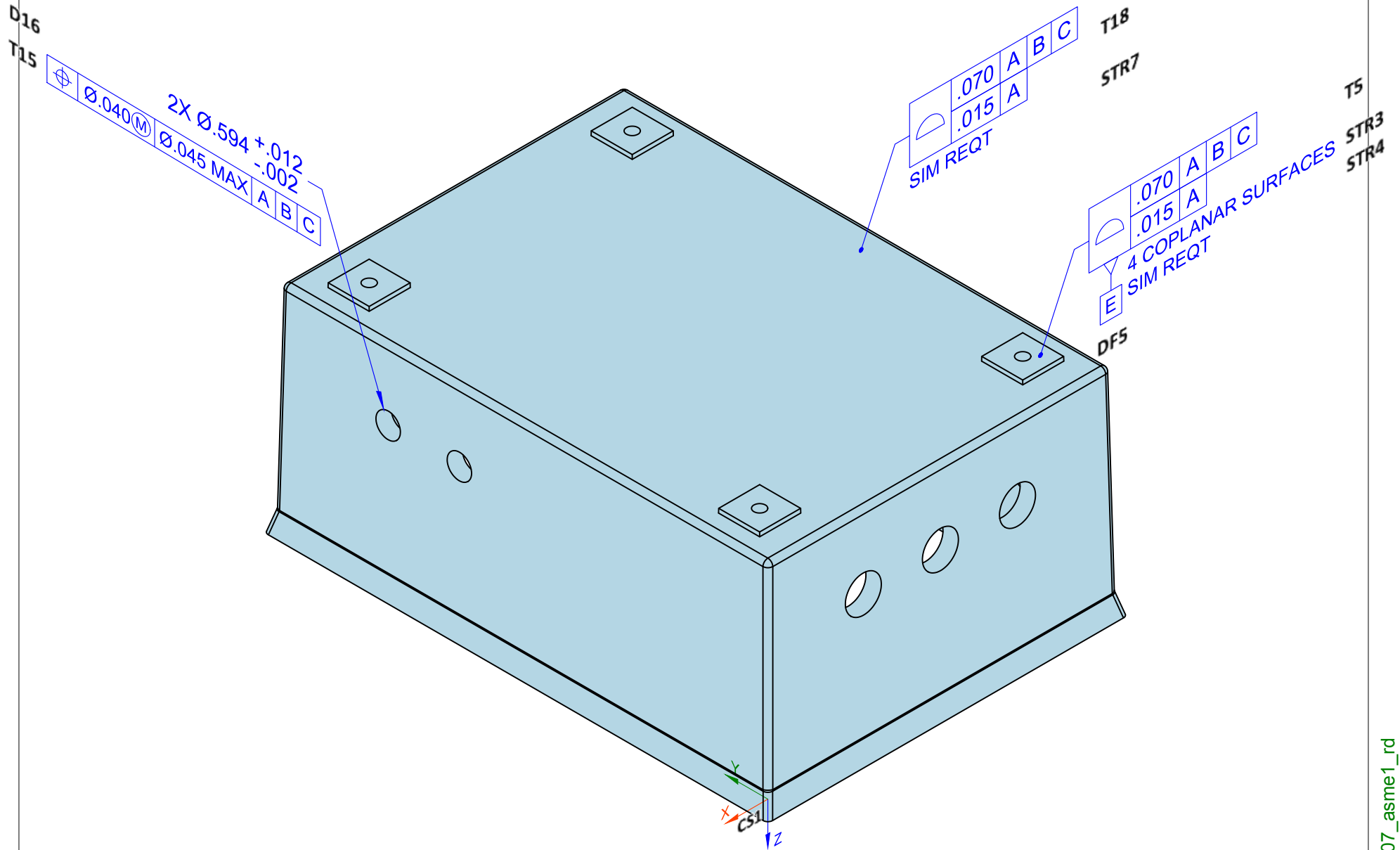
Rev D

NIST PMI Test Models - 2014



PMI Fully-Toleranced Test Case 7 - View B
 Includes Atomic Test Cases - 64, 67, 69, 71, 83

NIST PMI Test Models - 2014

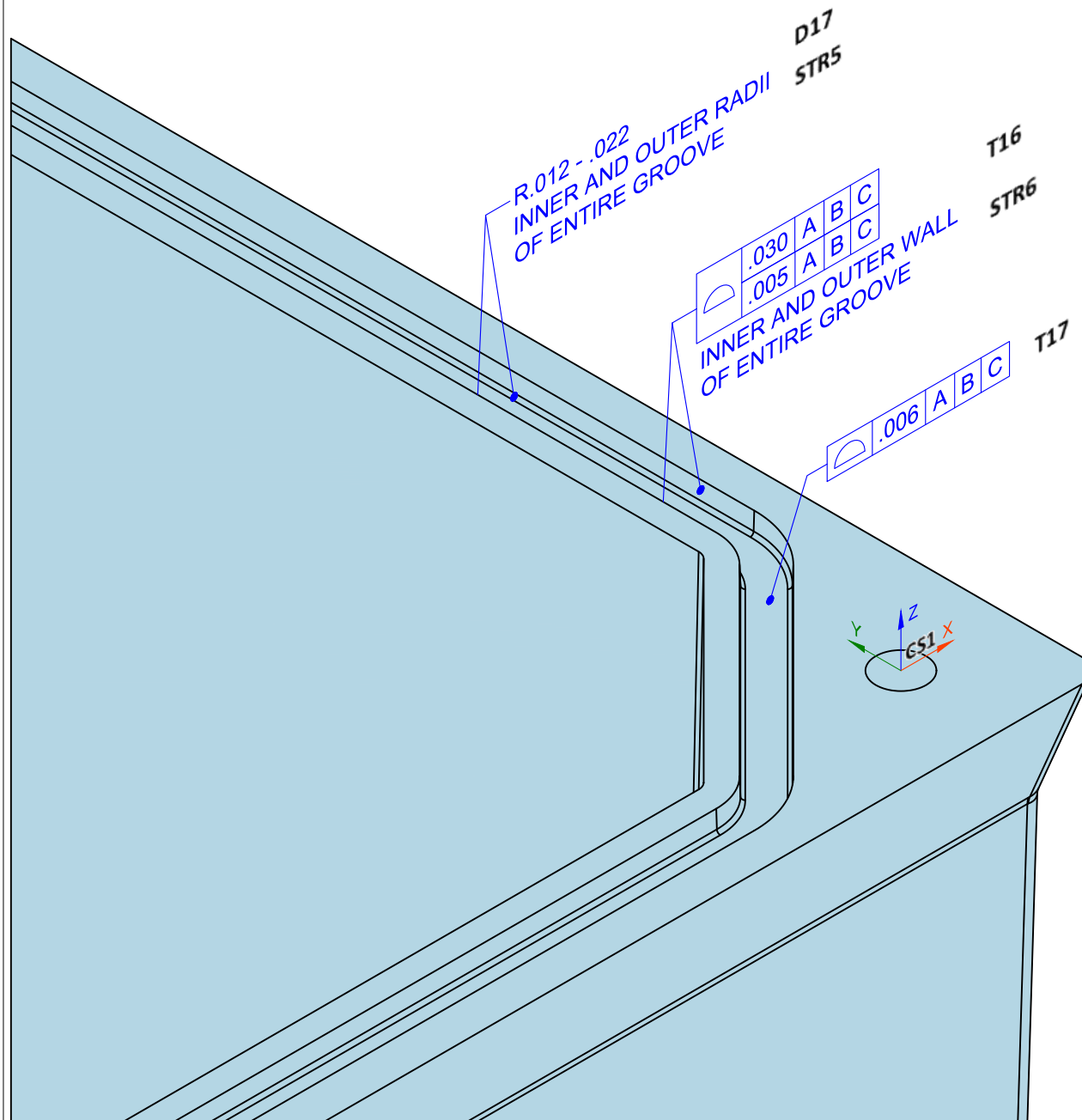


PMI Fully-Toleranced Test Case 7 - View C
Includes Atomic Test Cases - 62, 67

Rev D

nist_ftc_07_asme1_rd

NIST PMI Test Models - 2014



PMI Fully-Toleranced Test Case 7 - View D
No Atomic Test Cases Included in This View